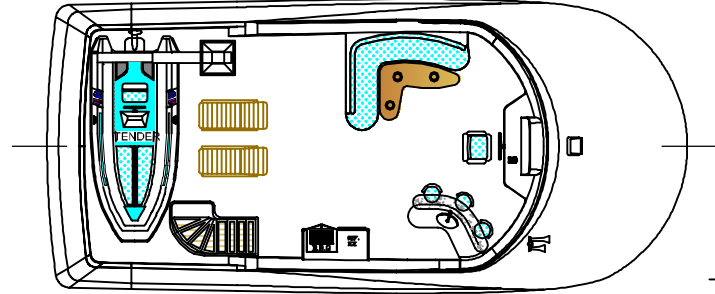
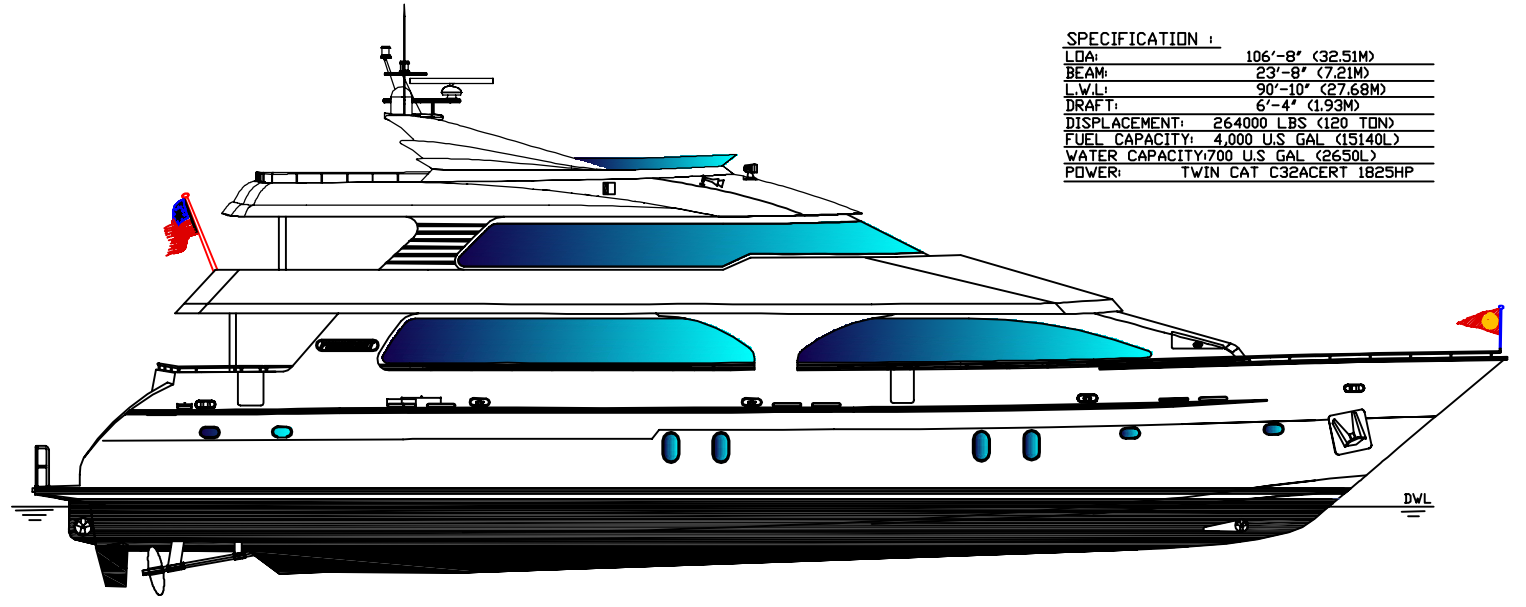
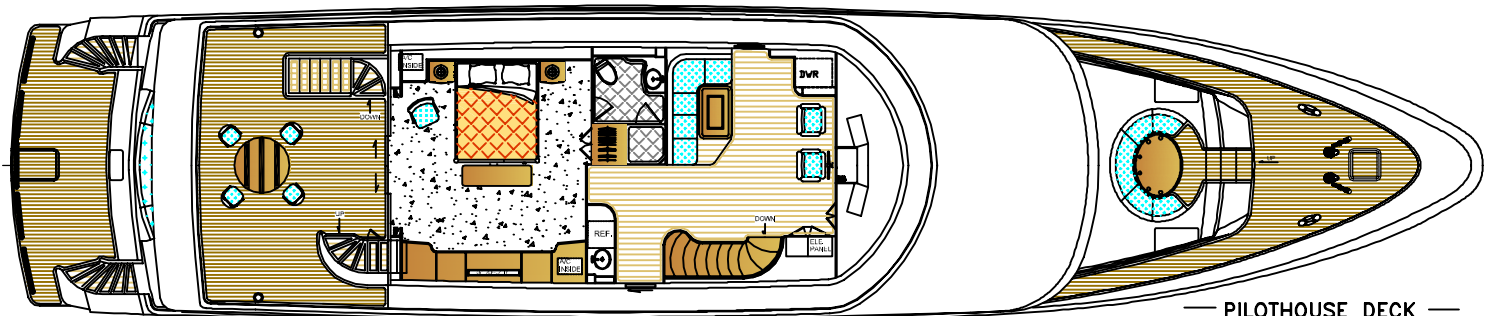


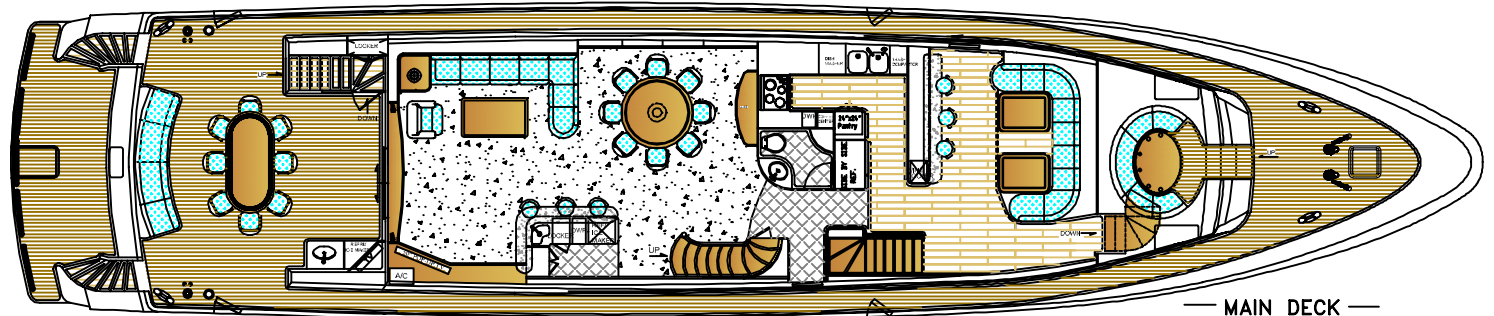
SPECIFICATION :	
LOA:	106'-8" (32.51M)
BEAM:	23'-8" (7.21M)
L.W.L:	90'-10" (27.68M)
DRAFT:	6'-4" (1.93M)
DISPLACEMENT:	264000 LBS (120 TON)
FUEL CAPACITY:	4,000 U.S. GAL (15140L)
WATER CAPACITY:	700 U.S. GAL (2650L)
POWER:	TWIN CAT C32ACERT 1825HP



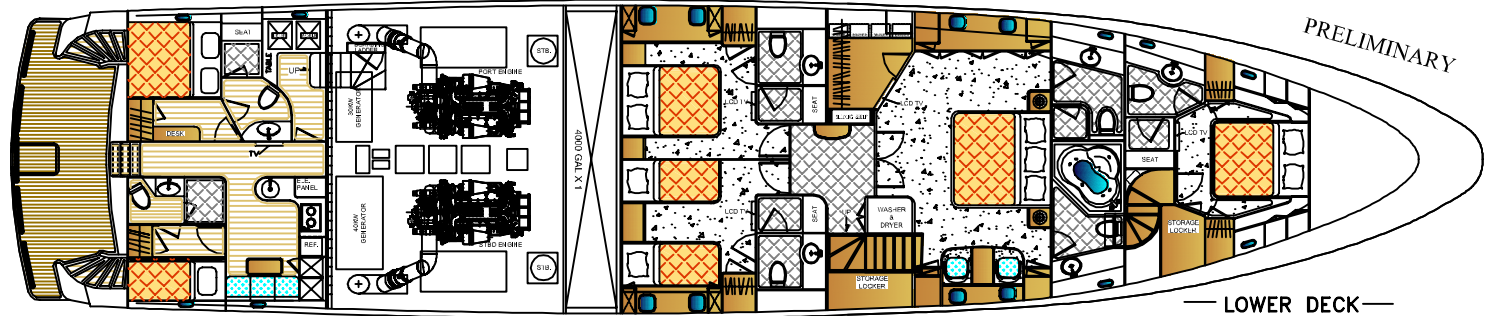
— BRIDGE DECK —



— PILOTHOUSE DECK —



— MAIN DECK —



— LOWER DECK —

PRELIMINARY

President Sterling 107' Triple Deck Mega Yacht

ALL SPECIFICATIONS & EQUIPMENT SUBJECT TO CHANGE WITHOUT NOTICE
 DRAWINGS MAY SHOW OWNER OR DEALER INSTALLED OPTIONS
 THIS DRAWING AND THE INFORMATION CONTAINED HEREON IS AND
 REMAINS THE PROPERTY OF PRESIDENT BOAT INTERNATIONAL CO., LTD.
 ITS REPRODUCTION IN ANY WAY OR USE FOR ANY PURPOSE OTHER THAN
 THAT INTENDED IS EXPRESSLY FORBIDDEN

Profile & General Arrangement
Drawing No.:TD107-001
Date: July 05, 2011
President Boat International Co., Ltd. Taiwan