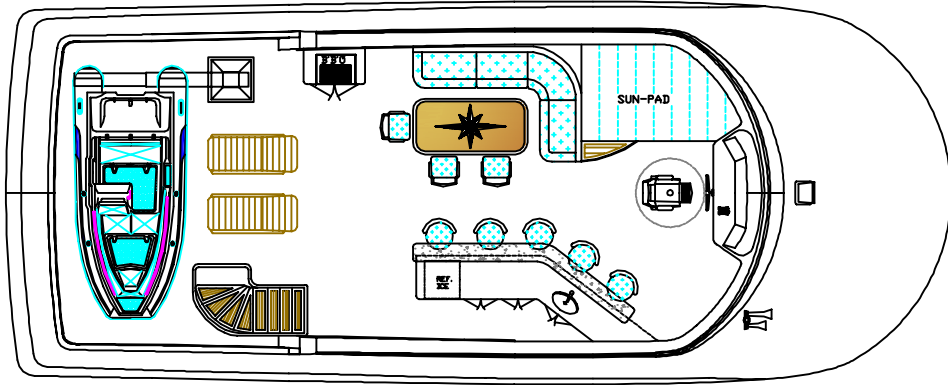
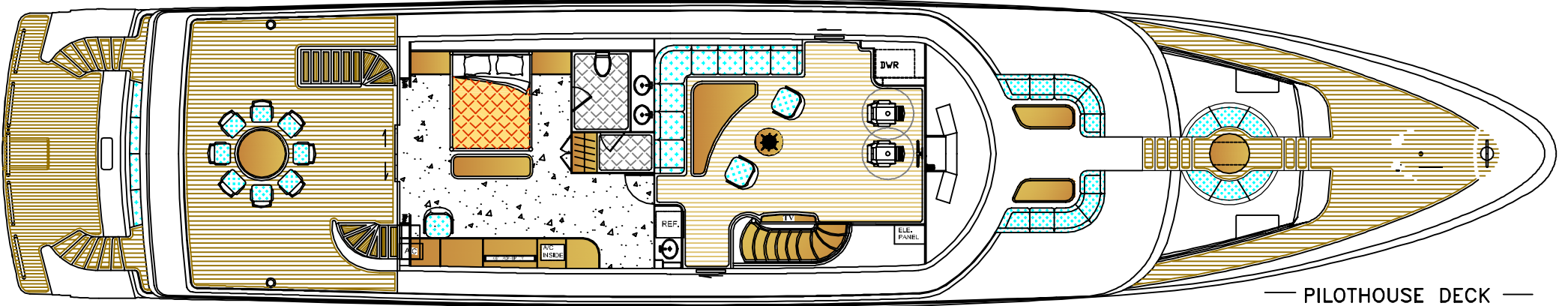


**SPECIFICATION :**

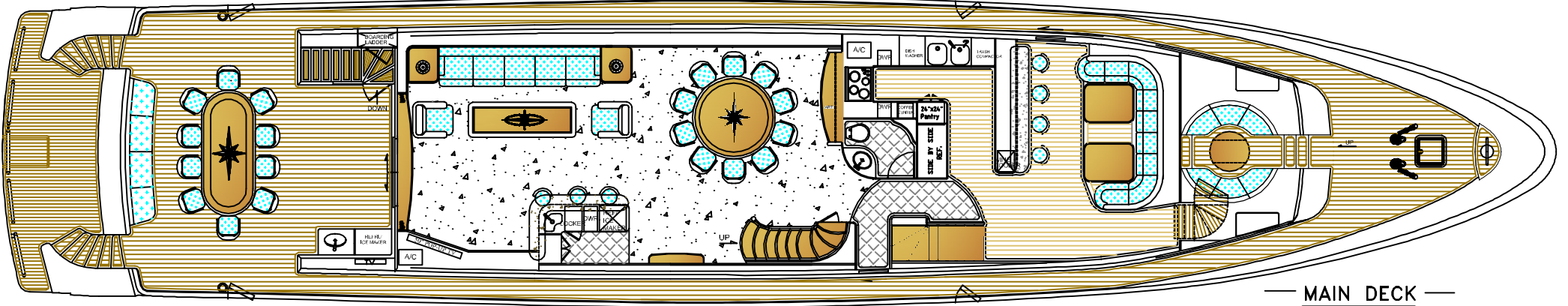
LOA:	115'-3" (35.13M)
BEAM:	23'-8" (7.21M)
L.W.L.:	99'-3" (30.25M)
DRAFT:	6'-1" (1.85M)
DISPLACEMENT:	281600 LBS (128 TON)
FUEL CAPACITY:	6,000 U.S. GAL (22710L)
WATER CAPACITY:	800 U.S. GAL (3028L)
POWER:	TWIN CAT C32ACERT 1800BHP



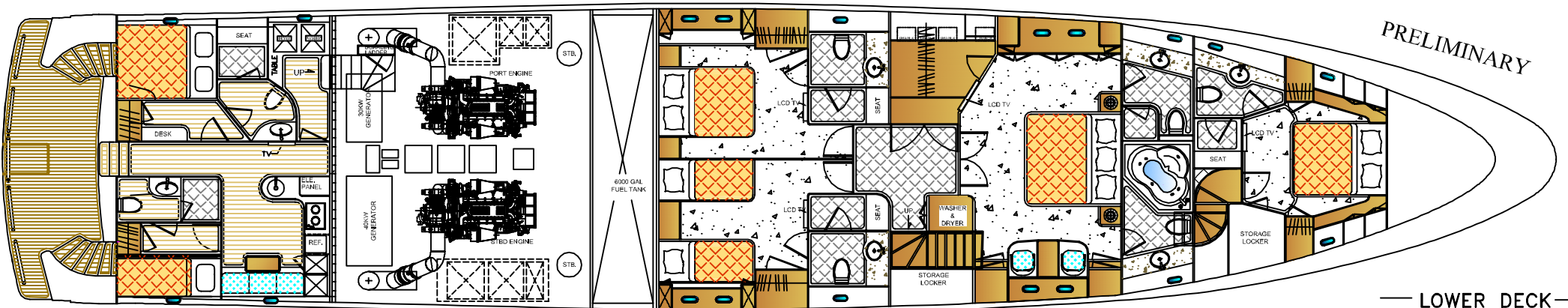
— BRIDGE DECK —



— PILOTHOUSE DECK —



— MAIN DECK —



— LOWER DECK —

PRELIMINARY

## President Sterling 115' Triple Deck Mega Yacht

ALL SPECIFICATIONS & EQUIPMENT SUBJECT TO CHANGE WITHOUT NOTICE  
DRAWINGS MAY SHOW OWNER OR DEALER INSTALLED OPTIONS

THIS DRAWING AND THE INFORMATION CONTAINED HEREON IS AND  
REMAINS THE PROPERTY OF PRESIDENT BOAT INTERNATIONAL CO., LTD.  
ITS REPRODUCTION IN ANY WAY OR USE FOR ANY PURPOSE OTHER THAN  
THAT INTENDED IS EXPRESSLY FORBIDDEN

Profile & General Arrangement
Drawing No.:PS115TDMY-01
Date: Sep . 21 , 2009
President Boat International Co., Ltd. Taiwan