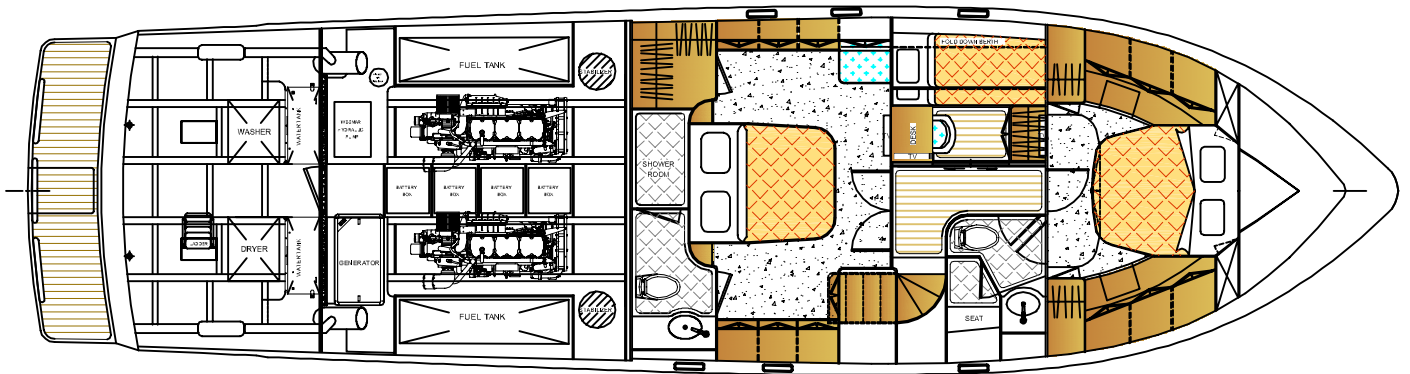
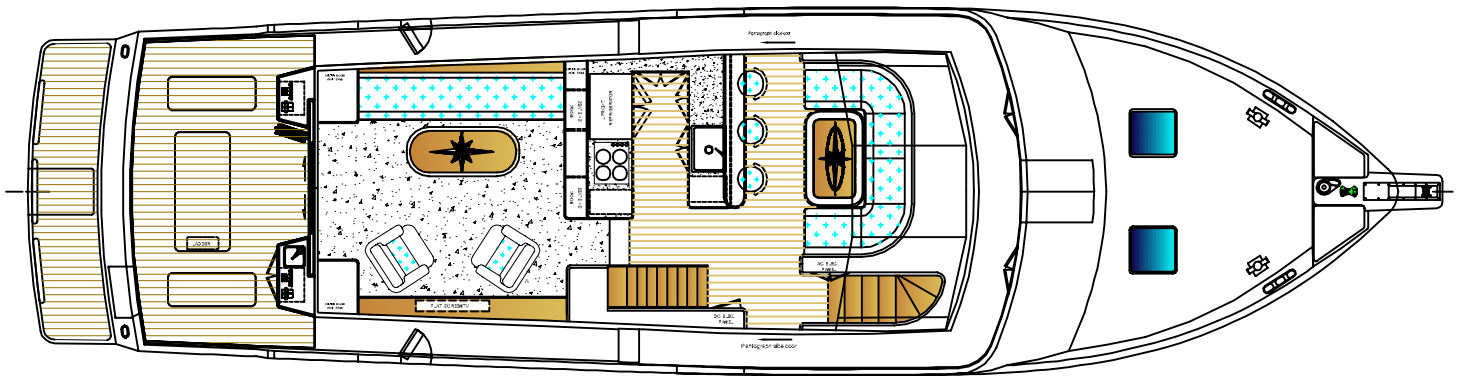
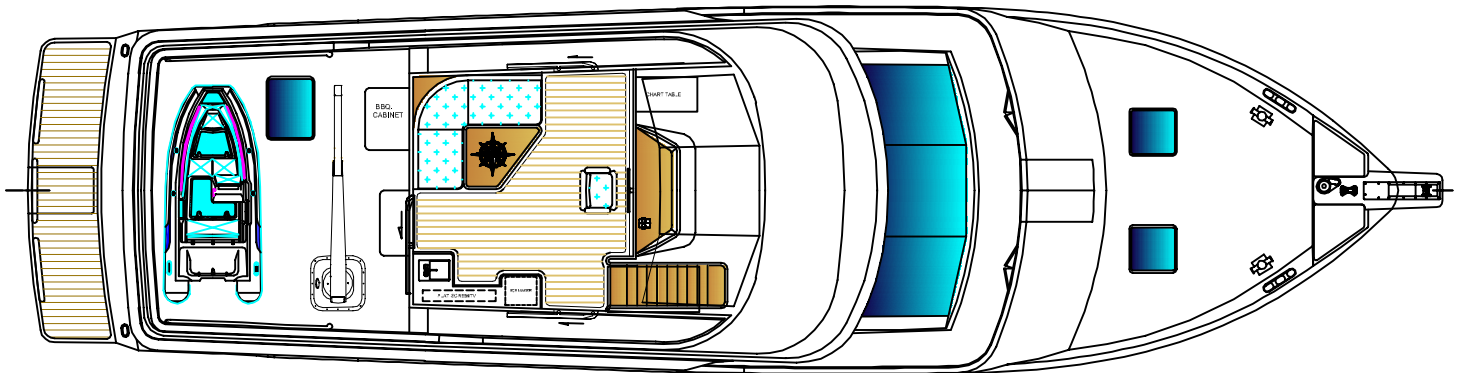


Specifications:

- L.O.A (including bow pulpit and swim platform).....64'-8"
- Hull Length (including swim platform).....62'-11"
- Max.Beam (including moulded rub rail).....18'-0"
- Fuel Tank Capacity.....1,000 US GALS
- Water Tank Capacity..... 300 US GALS



President 630 Pilothouse

ALL SPECIFICATIONS & EQUIPMENT SUBJECT TO CHANGE WITHOUT NOTICE
DRAWINGS MAY SHOW OWNER OR DEALER INSTALLED OPTIONS

THIS DRAWING AND THE INFORMATION CONTAINED HEREON IS AND REMAINS THE PROPERTY OF PRESIDENT BOAT INTERNATIONAL CO., LTD. ITS REPRODUCTION IN ANY WAY OR USE FOR ANY PURPOSE OTHER THAN THAT INTENDED IS EXPRESSLY FORBIDDEN

| |
|---|
| Profile & General Arrangement |
| Drawing No.: 630PH - 01 |
| Date: Dec. 3, 2008 |
| President Boat International Co., Ltd. Taiwan |