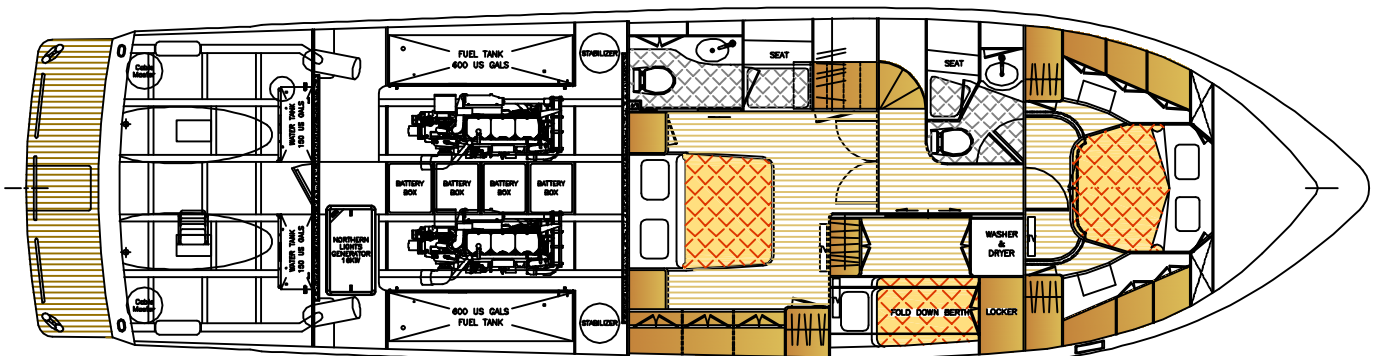
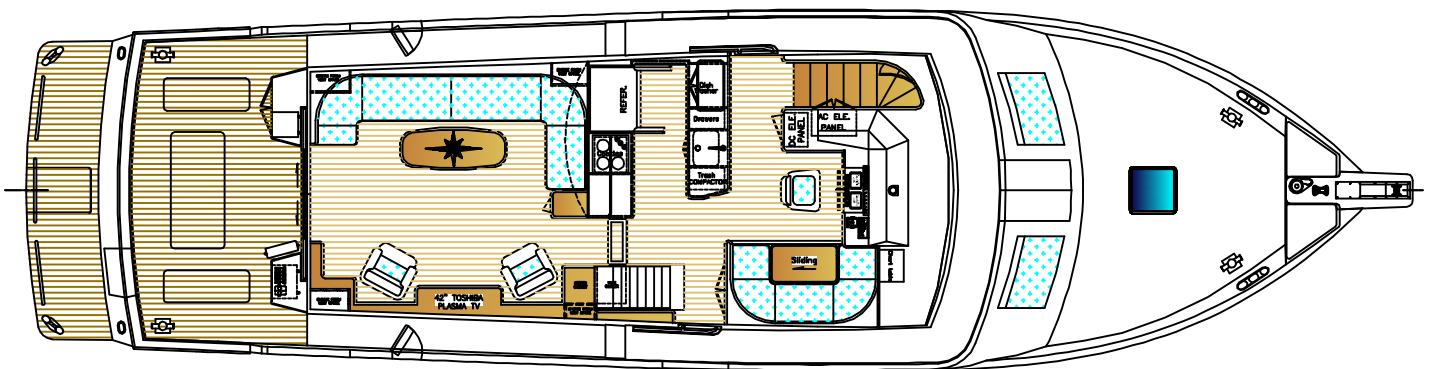
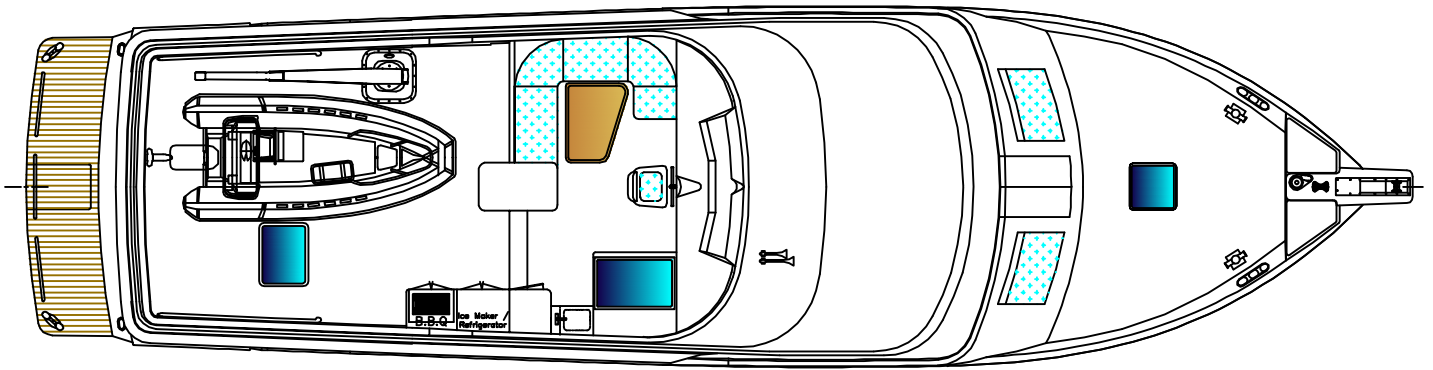


SPECIFICATION:
 L.O.A (including bow pulpit and swim platform).....64'-8"
 Hull Length (including swim platform).....62'-11"
 Max. Beam (including moulded rub rail).....18'-0"
 Fuel Tank Capacity.....1200 US GALS
 Fresh Water Tank Capacity.....300 US GALS



President 630 Pilothouse

ALL SPECIFICATIONS & EQUIPMENT SUBJECT TO CHANGE WITHOUT NOTICE
 DRAWINGS MAY SHOW OWNER OR DEALER INSTALLED OPTIONS
 THIS DRAWING AND THE INFORMATION CONTAINED HEREON IS AND REMAINS THE
 PROPERTY OF PRESIDENT BOAT INTERNATIONAL CO., LTD. ITS REPRODUCTION IN ANY
 WAY OR USE FOR ANY PURPOSE OTHER THAN THAT INTENDED IS EXPRESSLY
 FORBIDDEN

Profile & General Arrangement
Drawing No.: P630PH-03
Date: Jan. 29, 2010
President Boat International Co., Ltd. Taiwan