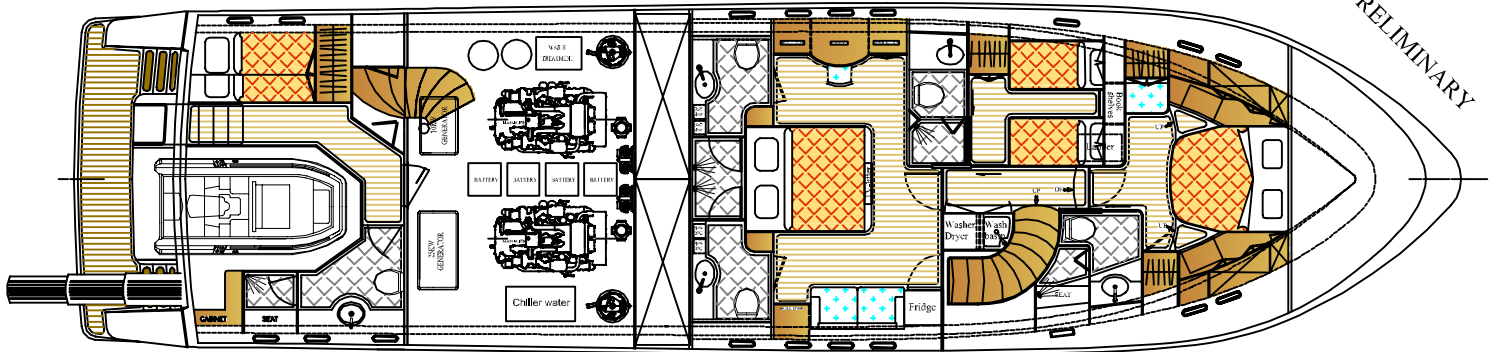
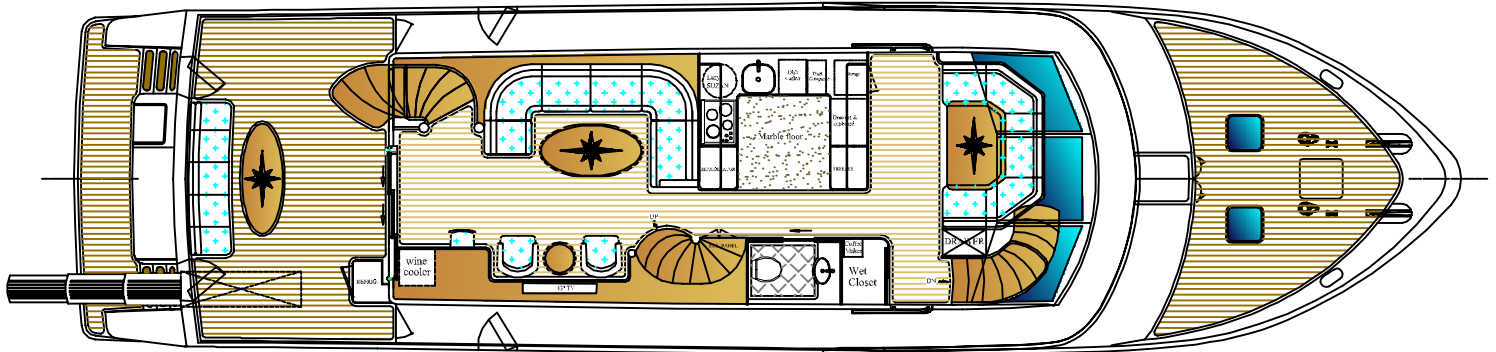
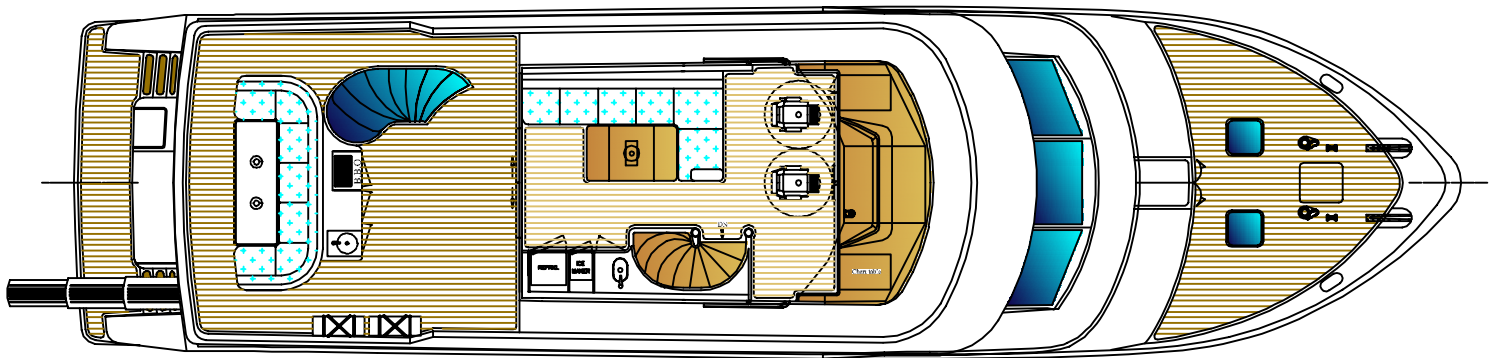


SPECIFICATIONS:

Maximum length (including swim platform and bow pulpit).....23.85 M (78'-3")
 Hull length (including swim platform).....23.85 M (78'-3")
 Maximum Beam..... 6.17 M (20'-3")
 Fuel Tank Capacity.....9,080 L (2,400 US Gals)
 Fresh Water Tank Capacity.....1,510 L (400 US Gals)
 Engine.....Caterpillar C18 Acert 1,001 bhp x 2



PRELIMINARY

President 780 Motor Yacht

ALL SPECIFICATIONS & EQUIPMENT SUBJECT TO CHANGE WITHOUT NOTICE
 DRAWINGS MAY SHOW OWNER OR DEALER INSTALLED OPTIONS
 THIS DRAWING AND THE INFORMATION CONTAINED HEREON IS AND
 REMAINS THE PROPERTY OF PRESIDENT BOAT INTERNATIONAL CO., LTD. ITS
 REPRODUCTION IN ANY WAY OR USE FOR ANY PURPOSE OTHER THAN THAT
 INTENDED IS EXPRESSLY FORBIDDEN

Profile & General Arrangement
Drawing No.: PG780MY-02
Date: Dec . 04 , 2009
President Boat International Co., Ltd. Taiwan